

sparsh
3 bhk fine living

by
SANVI CASA
Space that Speaks

brm.co.in



STEP INTO THE WORLD OF SENSEFUL LIVING

Sanvi-casa is the first project by the imaginative and advancing Sparsh group. It was thoughtfully designed with the goal of giving creative and sensitive lives by providing facilities that are specially curated for our exclusive residents. We want those who reside at Sanvi-casa to have the experience of touching delight, comfort, and grandeur.

SANVI **CASA**
Spaces that Speak

One of the most delicate of human senses is touch. In our homes, we sought to emphasise the value of touch (Sparsh). Every detail in every nook has been chiselled to make the finest possible impression. Sanvi-Casa aspires to make people's lives flow as smoothly as possible, as if we were brushing the bow against the violin string, resulting in bliss as captivating as the violin melodies.

sparsh
3 bhk fine living



FEEL THE
GRANDEUR,
LIVE THE DESIGN

spārsh
3 bhk fine living



TOUCH THE QUALITY OF THE BUILD

The material used at the Sanvi-casa is carefully selected, and only the highest quality of everything is used, in order for it to not only be structurally reliable but also strong.



TOUCH THE FRESHNESS OF THE EARTH

We allow nature to touch our lives,
by incorporating landscaping into our
homes that maintains the freshness of
nature in our day-to-day activities.





A close-up photograph of a hand reaching down to touch a body of water. The hand is positioned on the left side of the frame, with the index finger extended towards the water's surface. The water is a deep blue-grey color, and the background is a soft, out-of-focus landscape with hills and a cloudy sky. The overall mood is serene and peaceful.

TOUCH THE SERENE FLOW OF WATER

Water has the power to bring peace and tranquility into your life. At Sanvi-Casa, we add tranquil water features, such as a water lily pond.



spārsh
3 bhk fine living

TOUCH THE HEALTHY LIFESTYLE

We realise the importance of being healthy, so we've included a fully equipped gym to make it simpler for you to attain your optimum health.





MORE
AMENITIES
FOR YOU



Children play area



water lily pond



Indoor games



Lawn



Zen garden



No-vehicular Zone



Entrance foyer



Society office



Sit-outs with planters



Yoga/pilates hall



Art wall



Entrance water cascade



Multipurpose hall



TV room



Lounge



Senior citizen sit-outs



Card room



Library



Entry/exit wicket gate



Common washrooms



Bird feeder

GROUND FLOOR



24.00MT WIDE ROAD



ENTRANCE TO AN
EXCEPTIONAL LIFESTYLE

spārsh
3 bhk fine living

TYPICAL FLOOR

(1st to 11th Floor)

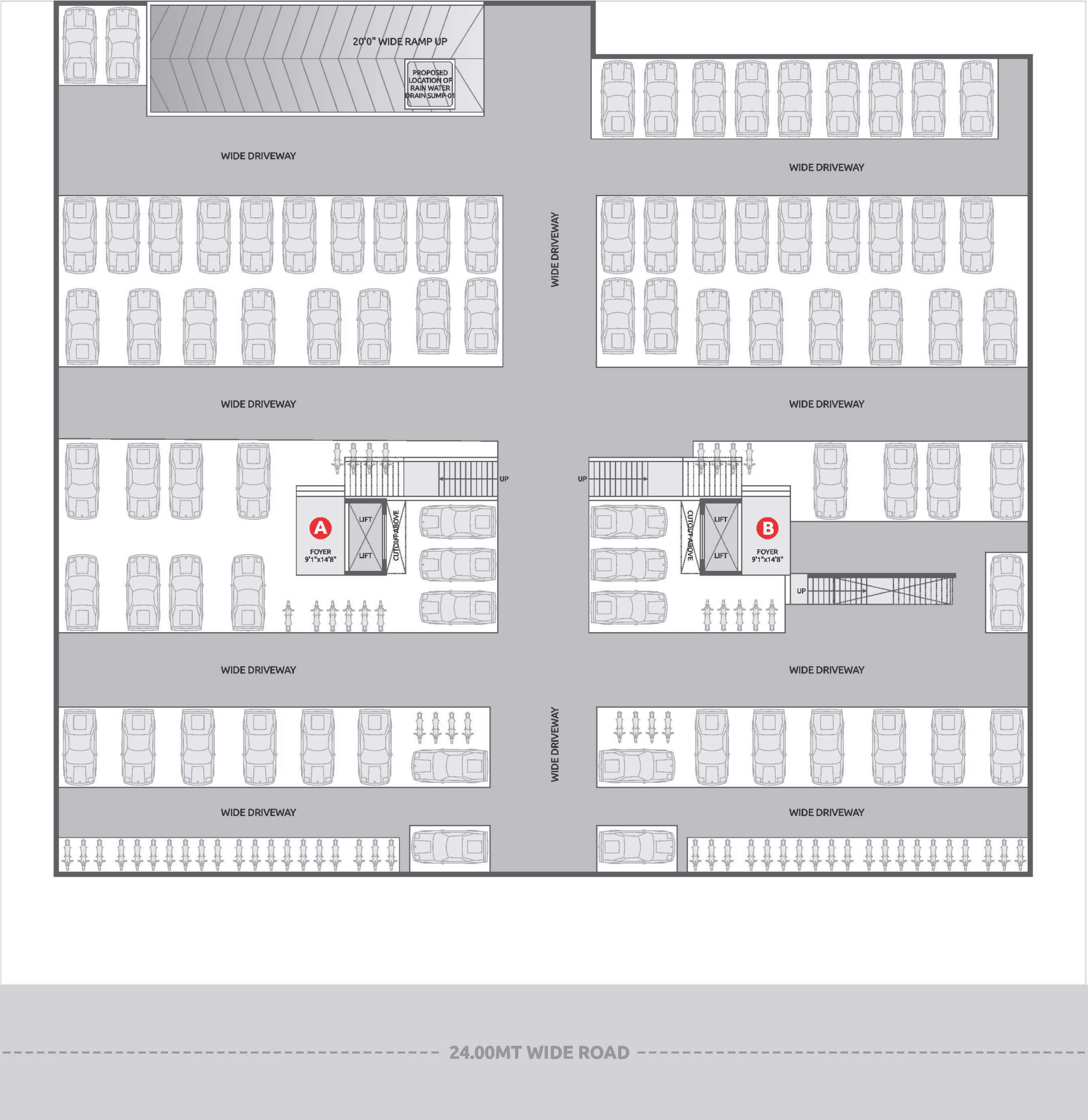


12TH FLOOR

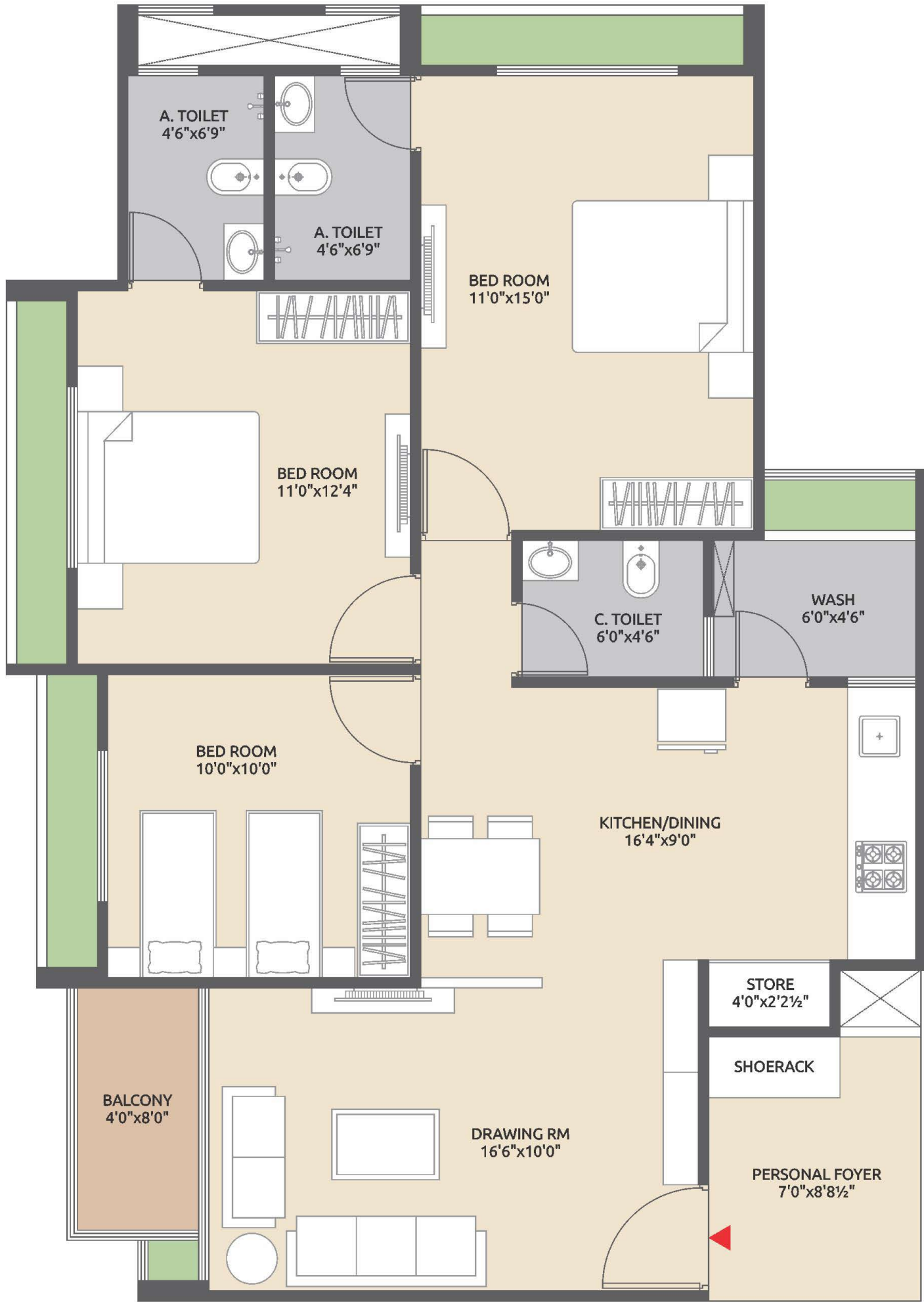


24.00MT WIDE ROAD

BASEMENT PLAN



UNIT PLAN



SPECIFICATIONS

STRUCTURE

R.C.C. frame structure
Outside Double coat plaster with Texture
Inside mala finish plaster.

ELECTRIFICATION

Concealed copper wiring and modular switches ISI standard company.

TOILET / BATHROOMS

Designer tiles in all toilets up to lintel level.
Standard quality of sanitary ware & C.P fittings.

PAINT

All exterior walls with acrylic paint and all interior walls will be white putty.

KITCHEN

Standard quality polished granite or Stone in Platform.
S.S. sink of standard quality.

DOORS

Flush door with both side designer laminate.

WINDOWS

Aluminum section windows.

FLOORING

Standard vitrified tiles.



SKILL-FULLY PLANNED,
FROM FLOOR TO CEILING



MAGNIFICENTLY DESIGNED
MASTER BEDROOM



Safal Parisar Rd., Opp. Ghuma Parivar Vadi,
South Bopal,
Ahmedabad, Gujarat.

DPS Bopal

The New Tulip
International
School

Veeha
Children's
Hospital

Saraswati
Multi speciality
Hospital

Suncity
Sector 7

Aarohi
Crest

City Civic
Center Bopal

Sobo Center
Bopal

Ratnaakar
Verte

Tej Hospital

Flora
Ixora

Veda Health
Clinic

Ghuma Gagar
Patidar Samaj
Vadi

Apollo
International
School

Club O7

Shanti Asiatic
School

Krishna Shalby
Hospital

AUDA Sports
complex

NOTE

• Any Amendments in Rules And Regulations by Government or Local Authority will be Bound To all Members. • UGVCL Power, A.M.C. Stamp Duty, Legal Charges, G.S.T. & Any other Govt. Taxes and Maintenance Charges will be Borne by Members • External & Internal changes shall not be allowed. Before possession Execution of sale deed is compulsory. • Developer reserve right of any changes in the scheme & it shall be bound to all member. • This Brochure is only private circulation for general information to the member & shall not form a part of any Legal agreement. • It can be changes without prior notice, All the architectural and interior views in brochure are computer graphics simulated interpretation of the actual property. • Consider all dimension as per passing drawing. • This brochure including the virtual image & virtual furniture there in is just for an easy presentation of the project and should not be treated as a legal document • Subject to Ahmedabad Jurisdiction.

Developer

SANVICASA
Spaces that Inspire

9825788836 / 37

sanvicasabuildcon@gmail.com

Architect

DESIGN CODE
ARCHITECT

MEP

ADARSH
CONSULTANT

STRUCTURE

SHREEJI
CONSULTANTS

PR/GJ/AHMEDABAD/AHMEDABAD CITY/AUDA/MAA10818/181022 | www.gujrera.gujarat.gov.in